

# STRAIGHT FILTERED D-SUB ORDERING CODE

PDF-15 S S - S W - H

NUMBER OF PINS =09  
=15  
=25  
=37

GENDER MALE =S  
FEMALE =R

TERMINATION TYPE P.C. PINS =BLANK  
SOLDER CUP =S  
EXTENDED P.C. PINS =E

INSULATOR COLOR BLACK =BLANK  
WHITE =W

MATING FACE 2.5mm HEX RIVET =BLANK  
3.8mm RIVET ATTACHED IN BACK =A  
5.8mm RIVET ATTACHED IN BACK =D  
5.8mm BOARD LOCK =G  
HOLE =H  
5.8mm RIVET ATTACHED IN FRONT =K  
4-40 THREADED RIVET & JACK SCREW (UNASSEMBLED) =P  
4-40 THREADED RIVET & JACK SCREW =R  
11.9mm BOARD LOCK =U

GOLD PLATING (XX IS GOLD IN MICRO INCHES) =GXX  
GOLD FLASH (STANDARD) =BLANK

# STRAIGHT FILTERED D-SUB BOARD MOUNT OPTIONS

## TERMINATION TYPE

		STANDARD		S OPTION	
		P.C. PINS		SOLDER CUP	
H OPTION HOLE					
K OPTION 5.8mm RIVET ATTACHED IN FRONT					
STANDARD 2.5mm HEX RIVET					
D OPTION 5.8mm RIVET ATTACHED IN BACK					
A OPTION 3.8mm RIVET ATTACHED IN BACK					
R OPTION ASSEMBLED 4-40 THREADED RIVET & JACK SCREW					
P OPTION UNASSEMBLED					

MATING FACE OPTIONS

**MATERIAL AND FINISH:**

Insulator: PBT, UL-94V-0 rated.

Shell: Steel, Tin plated.

Contacts: Brass, Gold plated on mating area, Tin on tails, all over Nickel underplated.

**ELECTRICAL SPECIFICATIONS:**

Rated current: 3A max.

Rated voltage: 250VAC max.

Insulation resistance: 3000 Mohm @ 500VDC

Dielectric withstanding voltage: 1000VAC for one minute

Contact resistance: 15 mohm max.

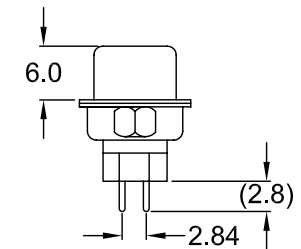
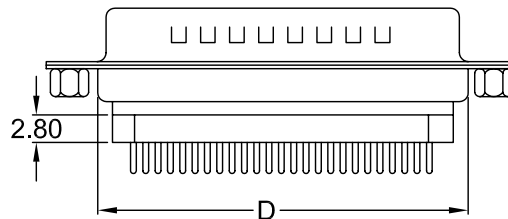
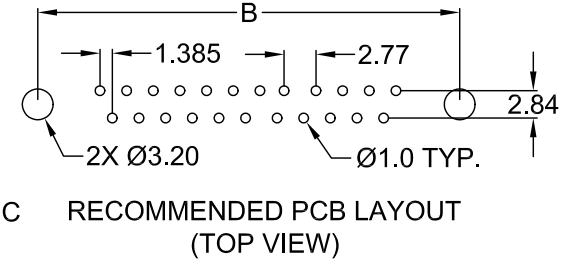
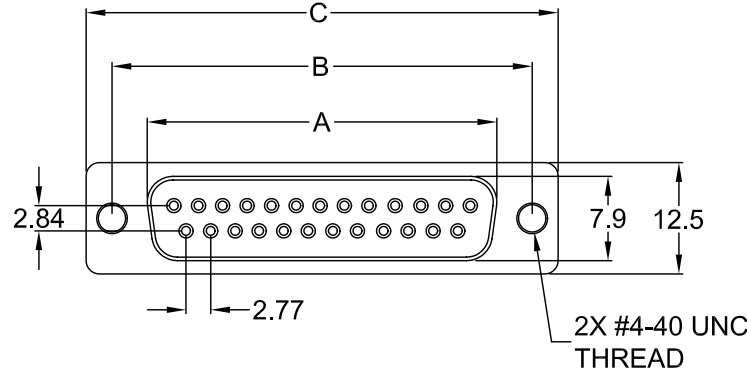
**ENVIRONMENTAL:**

Operating temperature: -55°C To +105°C

**NOTES:**

Replace first XX in P/N with number of positions.

POSITION	A	B	C	D
09	16.3	25.0	30.8	19.2
15	24.6	33.3	39.2	27.7
25	38.3	47.1	53.1	41.1
37	54.8	63.5	69.4	57.3



-X-XX: SEE ORDERING CODE FOR OPTIONS

TOLERANCE UNLESS OTHERWISE SPECIFIED	
X	± 1
X.X	± 0.4
X.XX	± 0.20

DRAWN BY	DF	DATE:	2/15/06
CHECK BY		DATE:	
APPR BY		DATE:	

**Power Dynamics, Inc.**  
 Phone: 973 560-0019 Whippany, New Jersey Fax: 973 560-0076

PART: STRAIGHT FILTERED FEMALE D-SUB  
 PC PINS

PART #: **PDF-XXRS-X-XX** SHEET 1 of 1

SIZE: A ALL DIMENSIONS FOR REFERENCE ONLY  
 SCALE: NTS DIMENSIONS ARE IN MILLIMETERS REV:

REV	DATE	CHANGE	CHK	CHK	APPR

6

5

4

3

2

1

**MATERIAL AND FINISH:**

Insulator: PBT, UL-94V-0 rated.

Shell: Steel, Tin plated.

Contacts: Brass, Gold plated on mating area, Tin on tails, all over Nickel underplated.

**ELECTRICAL SPECIFICATIONS:**

Rated current: 3A max.

Rated voltage: 250VAC max.

Insulation resistance: 3000 Mohm @ 500VDC

Dielectric withstanding voltage: 1000VAC for one minute

Contact resistance: 15 mohm max.

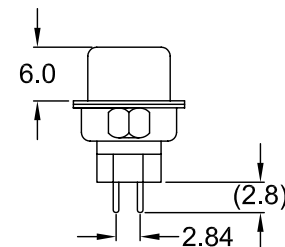
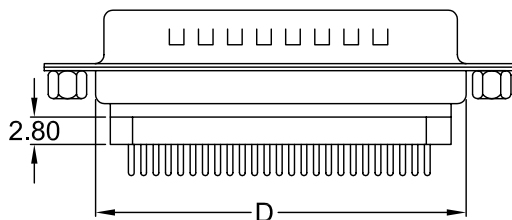
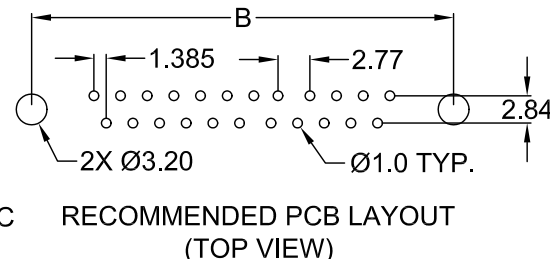
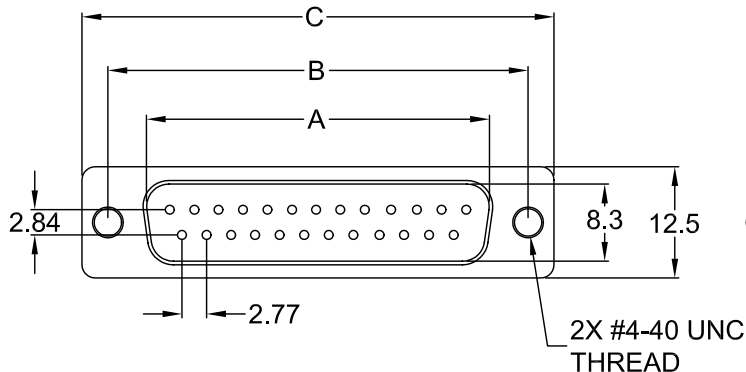
**ENVIRONMENTAL:**

Operating temperature: -55°C To +105°C

**NOTES:**

Replace first XX in P/N with number of positions.

POSITION	A	B	C	D
09	16.9	25.0	30.8	19.2
15	25.3	33.3	39.2	27.7
25	39.0	47.1	53.1	41.1
37	55.2	63.5	69.4	57.3



-X-XX: SEE ORDERING CODE FOR OPTIONS

TOLERANCE UNLESS OTHERWISE SPECIFIED	
X	± 1
X.X	± 0.4
X.XX	± 0.20

DRAWN BY	DF	DATE:	2/15/06
CHECK BY		DATE:	
APPR BY		DATE:	

**Power Dynamics, Inc.**  
 Phone: 973 560-0019 Whippany, New Jersey Fax: 973 560-0076

PART: STRAIGHT FILTERED MALE D-SUB  
 PC PINS

PART #: **PDF-XXSS-X-XX**

SIZE: A SCALE: NTS

ALL DIMENSIONS FOR REFERENCE ONLY  
 DIMENSIONS ARE IN MILLIMETERS

SHEET 1 of 1  
 REV:

D

C

B

A

D

C

B

A

6

5

4

3

2

1

REVISIONS

CHNG	CHK	APPR
CHANGE		
DATE		
REV		

6

5

4

3

2

1

**MATERIAL AND FINISH:**

Insulator: PBT, UL-94V-0 rated.

Shell: Steel, Tin plated.

Contacts: Brass, Gold plated on mating area, Tin on tails, all over Nickel underplated.

**ELECTRICAL SPECIFICATIONS:**

Rated current: 3A max.

Rated voltage: 250V max.

Insulation resistance: 3000 Mohm @ 500VDC

Dielectric withstanding voltage: 1000VAC for one minute

Contact resistance: 15 mohm max.

**SOLDERBILITY:**

Solder time: 3 sec. ± 0.5 sec.

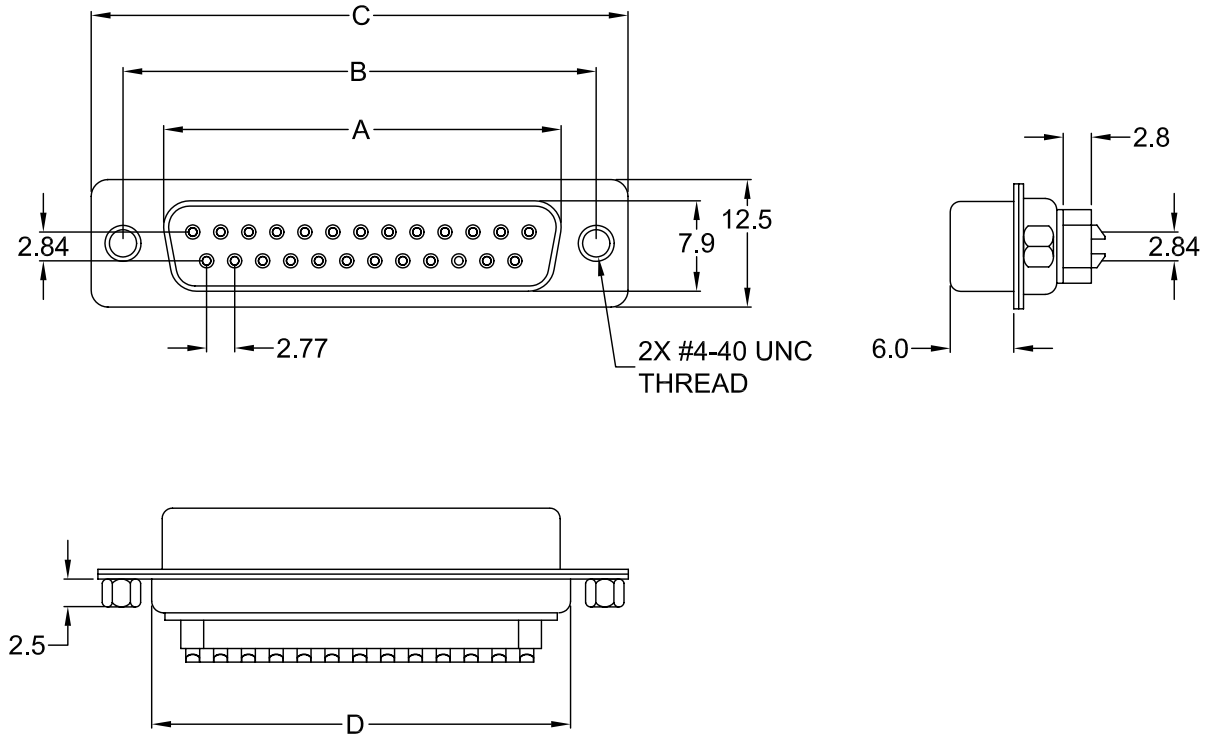
Solder temp: 245°C ± 5°C

**ENVIRONMENTAL:**

Operating temperature: -55°C To +105°C

NOTE: Replace first XX in part number with number of positions.

POSITION	A	B	C	D
09	16.3	25.0	30.8	19.2
15	24.6	33.3	39.2	27.7
25	38.3	47.1	53.1	41.1
37	54.8	63.5	69.4	57.3



-X-XX: SEE ORDERING CODE FOR OPTIONS

REVISIONS	CHNG	CHK	APPR
	CHANGE		
	REV	DATE	

TOLERANCE UNLESS OTHERWISE SPECIFIED			
X	± 1		
X.X	± 0.4		
X.XX	± 0.20		
DRAWN BY	DF	DATE:	2/15/06
CHECK BY		DATE:	
APPR BY		DATE:	

**Power Dynamics, Inc.**  
 Phone: 973 560-0019 Whippany, New Jersey Fax: 973 560-0076

PART: STRAIGHT FILTERED FEMALE D-SUB  
 SOLDER CUP

PART #: PDF-XXRS-SX-XX		SHEET 1 of 1
SIZE: A	ALL DIMENSIONS FOR REFERENCE ONLY DIMENSIONS ARE IN MILLIMETERS	
SCALE: NTS	REV:	

6

5

4

3

2

1

6

5

4

3

2

1

**MATERIAL AND FINISH:**

Insulator: PBT, UL-94V-0 rated.

Shell: Steel, Tin plated.

Contacts: Brass, Gold plated on mating area, Tin on tails, all over Nickel underplated.

**ELECTRICAL SPECIFICATIONS:**

Rated current: 3A max.

Rated voltage: 250V max.

Insulation resistance: 3000 Mohm @ 500VDC

Dielectric withstanding voltage: 1000VAC for one minute

Contact resistance: 15 mohm max.

**SOLDERBILITY:**

Solder time: 3 sec. ± 0.5 sec.

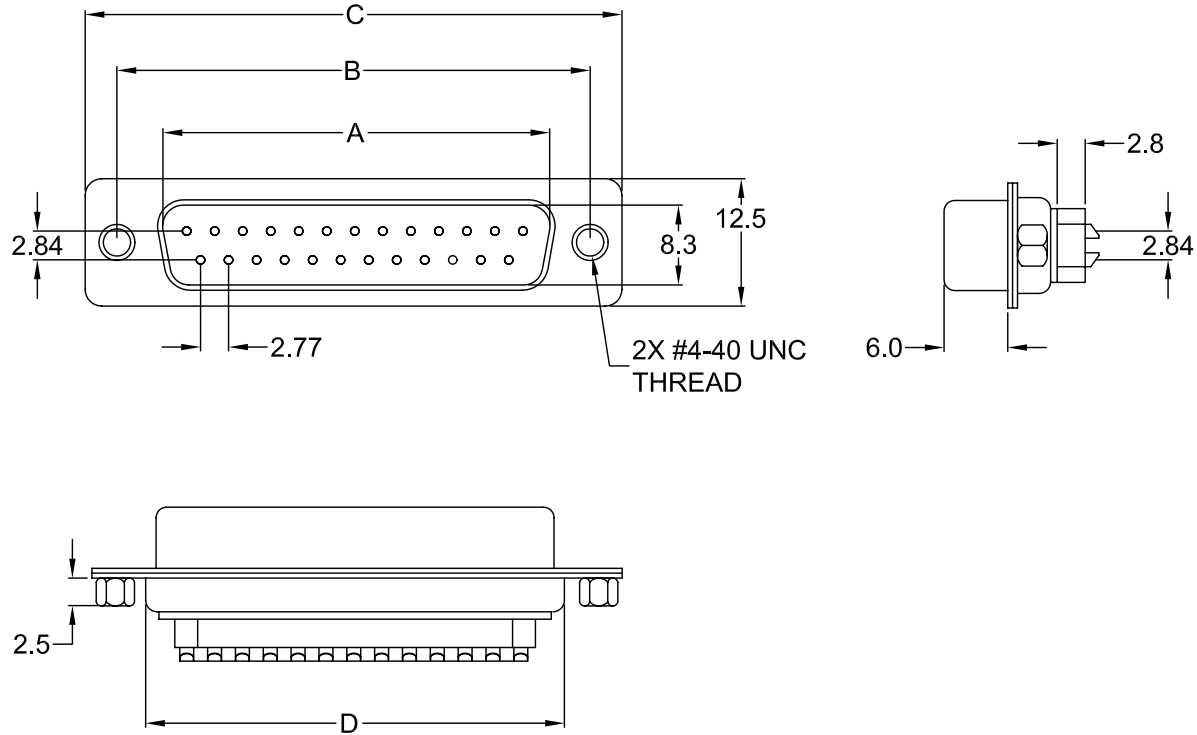
Solder temp: 245°C ± 5°C

**ENVIRONMENTAL:**

Operating temperature: -55°C To +105°C

NOTE: Replace first XX in part number with number of positions.

POSITION	A	B	C	D
09	16.9	25.0	30.8	19.2
15	25.3	33.3	39.2	27.7
25	39.0	47.1	53.1	41.1
37	55.2	63.5	69.4	57.3



-X-XX: SEE ORDERING CODE FOR OPTIONS

REVISIONS	CHNG	CHK	APPR
	CHANGE		
	REV	DATE	

TOLERANCE UNLESS OTHERWISE SPECIFIED			
X	± 1		
X.X	± 0.4		
X.XX	± 0.20		
DRAWN BY	DF	DATE:	2/15/06
CHECK BY		DATE:	
APPR BY		DATE:	

**Power Dynamics, Inc.**  
 Phone: 973 560-0019 Whippany, New Jersey Fax: 973 560-0076

PART: STRAIGHT FILTERED MALE D-SUB  
 SOLDER CUP

PART #: PDF-XXSS-SX-XX

SIZE: A

SCALE: NTS

ALL DIMENSIONS FOR REFERENCE ONLY  
 DIMENSIONS ARE IN MILLIMETERS

SHEET 1 of 1

REV:

6

5

4

3

2

1